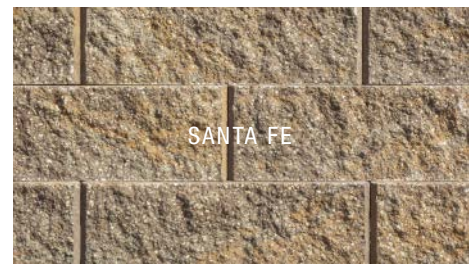
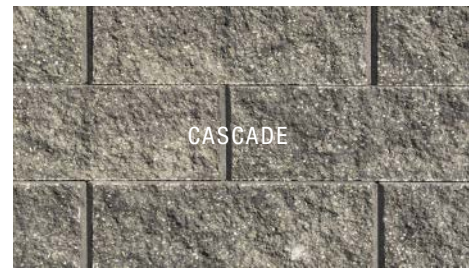
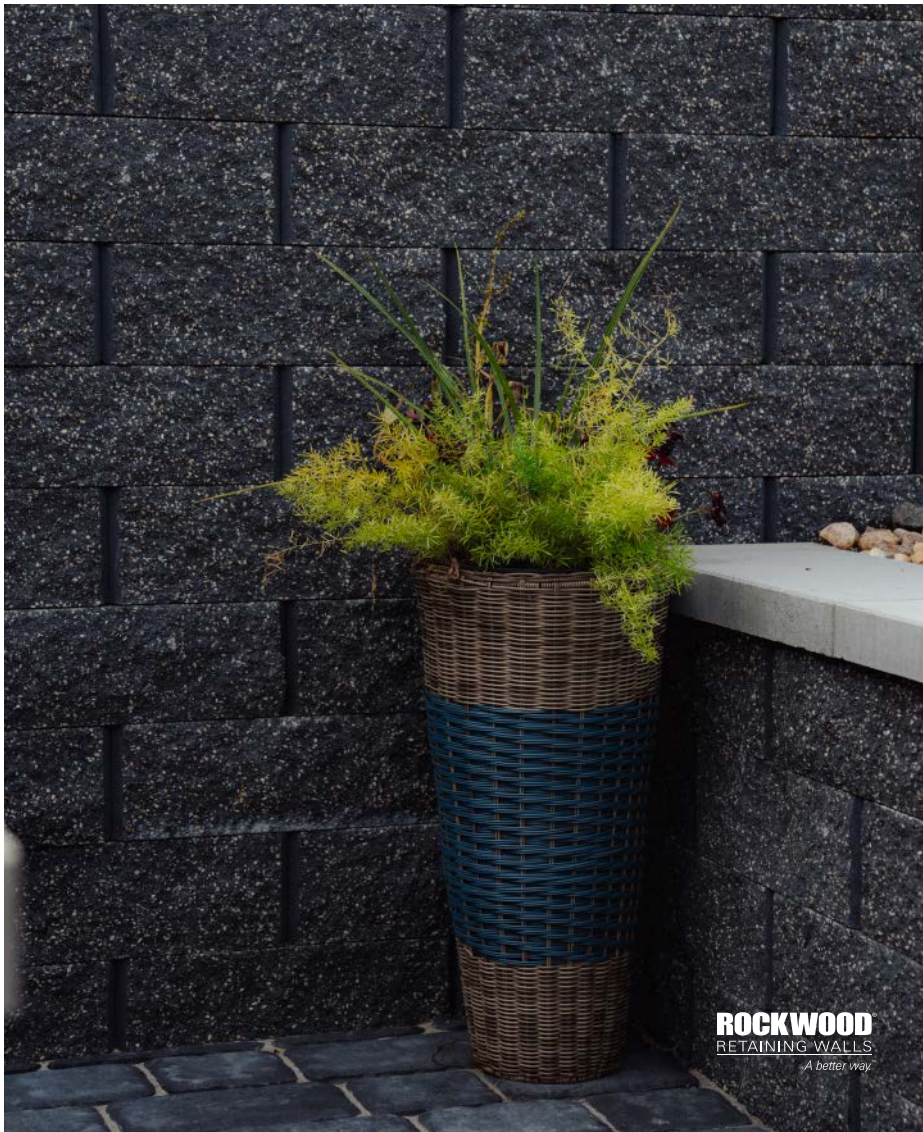


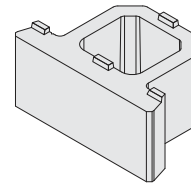
PREMIER 6 PRO RETAINING WALL

Scan for online gallery



Ordering and Installation:

- Straight-split face, anchor bar design
- Easy-to-handle for increased efficiencies in the field
- Featuring Tri-Lock™ Technology for a strong, automatic 0.75" / 4.7" setback
- Designed with Max Core™ Technology creating continuous stone columns for impressive connection strength and resistance to shear, void/fill coefficients = 0.011 CY (.017 tons)
- Radius: 8' at top of wall with little to no modifications
- Cap 4" Universal, Contemporary or Chiseled Cap
- Available by layer or pallet



NEW!
Featuring
Tri-Lock™
Technology

Blocks	Dimensions	Face Area	Weight	Units/Layer	Layers	Units/Pallet	Pallet Weight
Premier 6	18 x 12 x 6" H	0.74 sq. ft.	43.5 lbs.	9	5	45 (33.3 sq. ft.)	2,010 lbs.
*Solid Corner Block	18 x 9 x 6" H	0.66 sq. ft.	76.6 lbs.	5	4	20 (13.2 sq. ft.)	1,582 lbs.

*Corners are split on one long and one short side, Rochester and Beaver Dam only. Dimensions shown are nominal.

Manufactured by:



7200 Broadway Ave. N, Rochester, MN 55906
Phone: 507-288-8850
rochesterpc.com



©Copyright 2026. All Rights Reserved. This information has been prepared for the benefit of customers interested in Rochester Concrete Products. It was reviewed carefully prior to publication. Rochester Concrete Products assumes no liability for its accuracy or completeness. Final determination of the suitability of any information or material for the use contemplated, or for its manner of use, is the sole responsibility of the user. 626